

CATALOGUE

OF THE

BRIDGEWATER COLLECTION

OF

PICTURES,

BELONGING TO

THE EARL OF ELLESMERE,

AT

BRIDGEWATER HOUSE, CLEVELAND SQUARE,

ST. JAMES'S.

FIFTH EDITION.

PRINTED FOR J. M. SMITH,

137, NEW BOND STREET,

(BY PERMISSION.)

1855.

Kat P - ELL 2145 - 4550

BIBLIOTHECA HERTZIANA

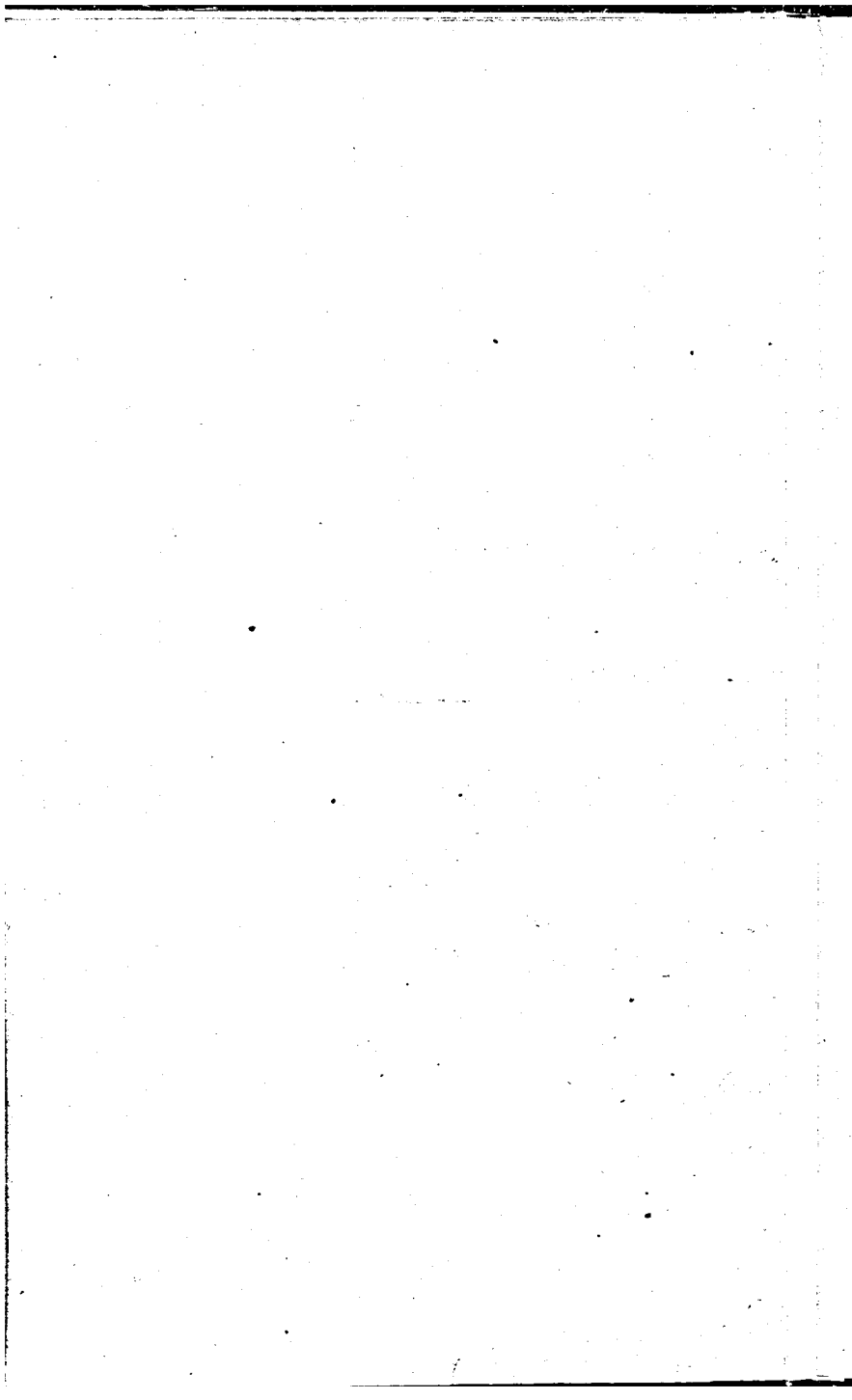
28 Via Gregoriana
ROMA

July 23rd, 1851.

“The impression is very prevalent that the exhibition to the Public of the Bridgewater Collection of Pictures is compulsory, in virtue of some provision in the Will of the late Duke of Bridgewater. I do not know how this delusion originated, but I know that it is of long standing; and I have had of late so many intimations of its continued existence and prevalence, that I consider it necessary to give it a formal contradiction.

“The impression in question is in every respect totally unfounded. It is not enough to state that the Duke of Bridgewater’s Will contains no direction whatever to the legal effect supposed,—no evidence written or traditional has ever reached me of any wish or intention on the part of my illustrious relative that the pictures collected by him should be exhibited to anybody.

“EGERTON ELLESMERE.”



A

CATALOGUE

OF

PICTURES.

*Those marked thus * were added to the Collection by the EARL OF ELLESMERE, and several of which have been removed to his Lordship's private residence.*

1. F. MILLÉ. [Nat. 1644.—Ob. 1680.
A grand Landscape, adorned with temples and other buildings.
Engraved in the Stafford Gallery.

2. VALENTIN. [Nat. 1600.—Ob. 1632.
A Musical Party.
From the Orleans Collection.
Engraved in the Galerie du Palais Royal and Stafford Gallery.

3. PALMA VECCHIO. [Nat. 1510.—Ob. 1538.
A Riposo of the Holy Family.
Engraved in the Stafford Gallery.

4. A. SCHIAVONE. [Nat. 1522.—Ob. 1582.
Christ before Pilate.
This picture formerly belonged to the Queen of Sweden, and was subsequently in the Orleans Collection.
Engraved in the Galerie du Palais Royal and Stafford Gallery.

5. G. P. PANINI. [Nat. 1691.—Ob. 1758.
 * Interior of a Picture Gallery, in which are introduced views of the principal sites of Rome, and representations of several pieces of antique sculpture; also the Artist and other gentlemen.
-

6. G. P. PANINI.
 * The Companion. A View of St. Peter's, Rome, with a grand procession of the French Ambassador and his Suite.
These two pictures were imported from America.
-

7. GASPAR POUSSIN. [Nat. 1613.—Ob. 1675.
 A Landscape intersected by a river.
Engraved in the Stafford Gallery.
-

8. G. POUSSIN.
 The Companion. A Landscape, with a view of a fertile valley encompassed by hills.
Engraved in the Stafford Gallery.
-

9. SASSO FERRATO. [Nat. 1605.—Ob. 1685.
 * Head of the Madonna.
-

10. LUDOVICO CARACCI—after CORREGGIO.
 The Marriage of St. Catharine in the presence of St. Jerome.
A copy of the celebrated picture at Parma.
Engraved in the Stafford Gallery.
-

11. CLAUDE LORRAINE. [Nat. 1600.—Ob. 1682.
 Demosthenes on the sea-shore. The philosopher is represented pacing the sand bank near the ruin of a beautiful portico, from which the eye looks over a wide expanse of water; two vessels are lying at anchor.

This picture belonged, in 1664, to M. de Bourlemont, and subsequently to Mr. Clarke and the Honourable Edward Bouverie. From the latter gentleman it was purchased by the Duke of Bridgewater.

Engraved in the Liber Veritatis, No. 171, and also in the Stafford Gallery. Described in Smith's Catalogue Raisonné, Part 8, No. 171,

12. CARLO CIGNANI. [Nat. 1628.—Ob. 1719.
The Saviour appearing to Mary Magdalene in the garden;
called the "Nolo me tangere".
From the Orleans Collection.
-
13. GUIDO RENI. [Nat. 1575.—Ob. 1642.
The Infant Jesus sleeping on his Cross.
From the Orleans Collection.
Engraved in the Galerie du Palais Royal and Stafford Gallery.
Mentioned by Stanley in Bryan's Dictionary of Painters.
-
14. LEONARDO DA VINCI. [Nat. 1452.—Ob. 1519.
The Head of a young Female.
From the Orleans Collection.
*Engraved in the Galerie du Palais Royal and in the Stafford
Gallery.*
-
15. TINTORETTO. [Nat. 1512.—Ob. 1594.
* Portrait of a Venetian Counsellor.
From the Collection of W. Coningham, Esq.
-
16. GUERCINO.
* Portrait of Beatrice Cenci.
-
17. TITIAN. [Nat. 1477.—Ob. 1576.
Diana and her Nymphs interrupted at the Bath by the ap-
proach of Actæon.
From the Orleans Collection.
Engraved in the Galerie du Palais Royal and Stafford Gallery.
-
18. TITIAN.
Diana and Calisto.
*Vasari, in his "Historia Pittorica", states, that this and the pre-
ceding picture were painted for Philip II of Spain. They were
afterwards in the Collection of Charles I.*
From the Orleans Collection.
Engraved in the Galerie du Palais Royal and Stafford Gallery.

19. TITIAN.
 Venus rising from the sea.
This picture formerly belonged to the Queen of Sweden, and subsequently to the Duke of Orleans; and is known under the title of "La Venus à la Coquille".
Engraved in the Galerie du Palais Royal and Stafford Gallery.
-
20. PARMIGIANO. [Nat. 1504.—Ob. 1541.
 The Virgin with the Infant Saviour, St. John and the Magdalen.
From the Collection of Mr. Bryan.
Engraved in the Stafford Gallery.
-
21. LANFRANCO. [Nat. 1581.—Ob. 1648.
 The Vision of St. Francis.
Engraved in the Stafford Gallery as the work of L. Caracci.
-
22. ELIZABETTA SIRANI. [Nat. 1638.—Ob. 1664.
 * The Magdalen contemplating the emblems of her faith and mortality.
-
23. ANTHONY VAN DYCK. [Nat. 1599.—Ob. 1641.
 The Madonna with the Infant Saviour.
There are three repetitions of this fine picture, described in Smith's Catalogue Raisonné, Part 3, No. 263. It has been frequently engraved.
-
24. L. CARACCI—after CORREGGIO.
 The Marriage of St. Catharine.
Formerly in the possession of the Countess de Foix, and recently in the Orleans Gallery.
Engraved in the Galerie du Palais Royal and Stafford Gallery.
-
25. ROTTENHAMER. [Nat. 1564.—Ob. 1606.
 Infants dancing in a ring, and others playing music.
From the Collection of Griffier Fagel.
Engraved in the Stafford Gallery.

26. TIARINI. [Nat. 1577.—Ob. 1608.
The Holy Family.
This picture is perhaps by Simon di Pesaro.
-
27. GUERCINO. [Nat. 1590.—Ob. 1666.
Abigail meeting David with presents, to appease his anger
against her husband Nabal.
*This picture was painted for Cardinal A. Barberini, in 1636.
Engraved in the Galerie du Palais Royal and Stafford Gallery.*
-
28. GIO. BAT. MOLA. [Nat. 1620.
St. John baptizing the Saviour in Jordan.
Engraved in the Stafford Gallery.
-
29. PALMA VECCHIO.
A Riposo of the Holy Family, with St. John and the lamb.
Engraved in the Stafford Gallery.
-
30. DOMENICHINO. [Nat. 1581.—Ob. 1641.
Christ bearing his Cross to Calvary.
*From the Orleans Collection.
Engraved in the Galerie du Palais Royal and Stafford Gallery.*
-
31. SEBASTIAN DEL PIOMBO. [Nat. 1485.—Ob. 1547.
The Entombment.
*Supposed to be designed by M. A. Buonarrotti.
From the Orleans Collection.
Engraved in the Galerie du Palais Royal and Stafford Gallery.*
-
32. VELASQUES. [Nat. 1594.—Ob. 1660.
* Portrait of a Natural Son of the Duke d'Olivarez.
*Purchased by the Earl of Ellesmere from the Collection of the
Count Altamira.*
-
33. PAUL MOREELZE. [Nat. 1571.—Ob. 1638.
St. Joseph, with the Infant Saviour in his arms.
Engraved in the Stafford Gallery.

34. FRANCESCO GESSI. [Nat. 1588.—Ob. 1649.

Madonna—a head.

Engraved in the Stafford Gallery.

35. RAFFAELLE. [Nat. 1483.—Ob. 1520.

The Holy Family, St. Joseph is presenting the Infant Saviour some flowers. Known as "La Sainte Famille au palmier". The head of Joseph is said to be a portrait of Bramante, the architect.

Circular, transferred from panel to canvas.

This beautiful picture belonged to the Marquis d'Aumont, who sold it to Mons. Delanoue; it was recently in the Orleans Collection.

Engraved by Rousselot; also in the Crozat Gallery, the Galerie du Palais Royal, and Stafford Gallery.

36. RAFFAELLE.

The Holy Family. The Virgin is lifting the drapery from the sleeping infant.

From the Collection of Sir Joshua Reynolds.

Engraved in the Stafford Gallery.

37. RAFFAELLE.

The Holy Family, with the Infant St. John paying homage to the Saviour.

This picture, which is known as "La belle Vierge", was painted for the Duke d'Urbino, and successively belonged to the King of Spain, Gustavus Adolphus, and Christina, Queen of Sweden.

Engraved by Pesne, and in the Crozat, the Galerie du Palais Royal, and Stafford Gallery.

38. RAFFAELLE.

The Virgin, with the Infant Saviour in her arms.

Transferred by Hacquin from panel to canvas.

From the Orleans Collection.

Engraved by Romanet; also in the Galerie du Palais Royal and Stafford Gallery.

39. PRIMATICCIO. [Nat. 1490.—Ob. 1570.

* A Procession of Nymphs.

40. TINTORETTO.

The descent from the Cross.

From the Orleans Collection.

Engraved in the Galerie du Palais Royal and Stafford Gallery.

41. CLAUDE LORRAINE.

A grand Landscape, in which is introduced the subject of Moses beholding the Burning Bush.

This picture belonged, in 1664, to M. de Bourlemont, and subsequently to Mr. Clarke and the Hon. Edward Bouverie, from whom it was purchased, with the Companion, No. 11, by the Duke of Bridgewater.

Engraved in the Liber Veritatis, No. 161, and in the Stafford Gallery, and described in Smith's Catalogue Raisonné, Part 8, No. 161.

42. CORREGGIO. [Nat. 1494.—Ob. 1534.]

The Virgin, with the Infant Saviour in her arms.

Transferred from panel to canvas.

From the Orleans Collection, in which it was known under the appellation of "La Vierge au panier".

• Engraved in the Galerie du Palais Royal and Stafford Gallery.

43. MAZZOLINO DI FERRARA. [Nat. 1481.—Ob. 1530.]

* The Circumcision of the Infant Saviour.

From the Collection of W. Conyngham, Esq.

44. GUIDO RENI.

* The Virgin seated sewing, attended by angels.

Engraved.

From the Collection of R. Udney, Esq.

45. BARTOLOMEO SCHIDONI. [Nat. 1560.—Ob. 1616.]

The Virgin instructing the Infant Saviour to read.

From the Orleans Collection.

Engraved in the Galerie du Palais Royal and Stafford Gallery.

62. NICOLO POUSSIN. [Nat. 1594.—Ob. 1665.

Moses striking the rock.

This picture was painted at Rome for M. Chantelou, and was subsequently in the Orleans Collection.

Engraved by Baudet and Dambrum; also in the Galerie du Palais Royal and Stafford Gallery. For further description see Smith's Catalogue Raisonné, Part 8, No. 31.

NICOLO POUSSIN.

The following Seven Pictures, representing the Sacraments, were painted at Rome for M. Chantelou, and were purchased by the Duke of Bridgewater from the Orleans Collection.

They are engraved in the Galerie du Palais Royal and Stafford Gallery; also by Andrau Pesne, Dughet, and others, and are fully described in Smith's Catalogue Raisonné, Part 8, No. 128, to 135.

63. The Sacrament of Baptism.

64. Confirmation.

65. Marriage.

66. Penance.

67. Ordination.

68. The Eucharist or Last Supper.

Felibien states that this picture was painted in 1644, and that it was the first done of the set, and the one most esteemed by the artist.

69. Extreme Unction.

70. FILIPPO LAURI. [Nat. 1623.—Ob. 1694.
Bacchus and Satyrs.

71. EMANUEL DE WITT. [Nat. 1607.—Ob. 1692.
* Interior of a church in Holland, with figures.

72. MURILLO. [Nat. 1613.—Ob. 1685.
* The Parable of the rich Man and Lazarus.
A spirited study.

73. ROGER VANDER WEYDE. [Nat. 1480.—Ob. 1529.
* The Descent from the Cross.
-
74. POLIDORO DA CARAVAGGIO. [Nat. 1495.—Ob. 1543.
The Passage of the Red Sea.
-
75. TINTORETTO.
The Presentation in the Temple.
From the Orleans Collection.
Engraved in the Stafford Gallery.
-
76. ANNIBAL CARACCI.
St. Gregory at his Devotions, supported by Angels.
This picture was painted for the Cardinal A. M. Salviati, to adorn the Chapel of the Church of St. Gregory at Rome, and was brought to this country by Messrs. Day and Cammucini in 1808.
Engraved by Frey.
-
77. TITIAN.
An Allegory of the Three Ages.
Painted for Giovanni di Castelli.
It subsequently passed through the collections of the Cardinal of Augsburg, the Queen of Sweden, and the Duke of Orleans.
Engraved in the Galerie du Palais Royal and Stafford Gallery.
A repetition of this picture may be found in the Borghese Palace at Rome, and another is in the Manfrini Gallery at Venice.
-
78. PAUL VERONESE.
The Judgment of Solomon.
From the Orleans Collection.
Engraved in the Galerie du Palais Royal and Stafford Gallery.
-
79. ANDREA DI SALERNO. [Nat. 1485.—Ob. 1550.
* Saint Catherine.
A full-length figure.
-
80. ANDREA DI SALERNO.
* Saint Rosalie.
Companion to the preceding.
These two pictures were the folding wings of a large altar piece by this Master (one of Raffaele's best pupils). They were purchased by the Earl of Ellesmere at Naples.

81. ANNIBAL CARACCI.
 St. Francis adoring the Infant Saviour.
From the Orleans Collection.
Engraved in the Galerie du Palais Royal and Stafford Gallery.
-
82. ALESSANDRO VERONESE. [Nat. 1582.—Ob. 1648.
 Joseph and Potiphar's Wife.
Painted on marble.
This picture formerly belonged to the Duc de Bourbon, and was
lastly in the Orleans Collection.
Engraved in the Galerie du Palais Royal and Stafford Gallery.
-
83. DOMENICHINO.
 The Vision of St. Francis; the Saint is kneeling in prayer.
From the Orleans Collection.
Engraved in the Galerie du Palais Royal and Stafford Gallery.
-
84. ANNIBAL CARACCI.
 St. John pointing to the Messiah, who is seen approaching in
 the distance.
Formerly in the collections of the Duke of Parma and M. Paillot,
and recently in the Orleans Collection.
Engraved in the Galerie du Palais Royal and Stafford Gallery.
-
85. BALTHAZAR PERUZZI. [Nat. 1481.—Ob. 1536.
 The Magi adoring, and presenting their offerings to, the
 Infant Saviour.
Engraved in the Galerie du Palais Royal and Stafford Gallery.
-
86. DENIS CALVERT. [Nat. 1555.—Ob. 1660.
 THE FOUNDER OF THE CARACCI SCHOOL.
 The Entombment of the Saviour.
-
87. SCHIAVONE.
 The Last Supper.
Copied from the picture by Titian, now in Spain.

88. ANNIBAL CARACCI.
Diana and Calisto.
From the Orleans Collection.
Engraved in the Galerie du Palais Royal and Stafford Gallery.
-
89. PARIS BORDONE. [Nat. 1513.—Ob. 1588.
The Holy Family reposing in a Landscape.
From the Orleans Collection.
Engraved in the Stafford Gallery.
-
90. LORENZO LOTTO. [Nat. 1490.—Ob. 1560.
The Virgin and Infant Saviour with Saints.
Engraved in the Stafford Gallery.
-
91. SCARZELLINO DA FERRARA. [Nat. 1560.—Ob. 1621.
Christ discovering Himself to his Disciples at Emmaus.
From the Orleans Collection.
Engraved in the Stafford Gallery.
-
92. FRANCESCO ALBANO. [Nat. 1578.—Ob. 1666.
The Virgin with the Infant Jesus, attended by Angels.
Engraved in the Stafford Gallery.
-
93. SALVATOR ROSA. [Nat. 1615.—Ob. 1673.
A View in a wild and mountainous Country. The principal
feature is supposed to represent the promontory near the mouth of
the Tagus, known to sailors by the name of the Rock of Lisbon.
*Formerly in the Collection of the Duc de Praslin, where it was
known by the appellation of "Les Augures", or "The Soothsayers".*
Engraved in the Stafford Gallery.
-
94. FILIPPO LAURI.
The Virgin and Infant Saviour, attended by Angels.
Engraved in the Stafford Gallery.
-
95. LEANDRO BASSANO. [Nat. 1558.—Ob. 1623.
The Last Judgment.
From the Orleans Collection.
Engraved in the Stafford Gallery.

96. FILIPPO LAURI AND MARIO DA' FIORI.

A Group of Three Cupids buoyant in air, encircled with flowers.

Engraved in the Stafford Gallery.

97. CLAUDE LORRAINE.

A Pastoral Landscape, in which are introduced the Cascatelli of Tivoli.

Engraved, No. 101, in the Liber Veritatis.

For description, see Smith's Catalogue Raisonné, Part 8, No. 101.

98. LODOVICO CARACCI.

* A Pietá.—A study for an Altar-piece.

99. PAUL BRILL AND A. CARACCI.

A richly wooded Landscape, in which is introduced the subject of Pan pursuing Syrinx.

This picture was formerly in the Collections of the Duc de Choiseul and the Countess of Holderness.

Engraved in the Stafford Gallery.

100. JOHN VICTOR. [Nat. 1600.—Ob. 1670.]

Tobit giving counsel to his son Tobias, previously to his journey; the youth's mother sits by her spinning-wheel listening.

Engraved in the Stafford Gallery.

101. ANNIBAL CARACCI.

Danae.

From the Orleans Collection.

Engraved in the Galerie du Palais Royal and Stafford Gallery.

102. LODOVICO CARACCI. [Nat. 1555.—Ob. 1619.]

Dead Christ, with the Maries and St. John.

Formerly in the Collection of the Duke of Modena, and recently in the Orleans Collection.

Engraved in the Galerie du Palais Royal and Stafford Gallery.

103. CLAUDE LORRAINE.

A Landscape, in the foreground of which is represented the story of the Metamorphosis of the Apulean Shepherd.

This picture was painted for M. de la Garde in 1657. It is engraved in the Liber Veritatis, No. 142, and in the Stafford Gallery, and is described in Smith's Catalogue Raisonné, Part 8, No. 142.

104. TINTORETTO.

Portrait of a Gentleman holding open a large book.

From the Orleans Collection.

Engraved in the Stafford Gallery.

105. SALVATOR ROSA.

A grand Landscape, in which is introduced the subject of Jacob tending his Flocks.

Engraved in the Stafford Gallery.

106. TINTORETTO.

Portrait of a Venetian Gentleman.

Painted in 1588.

Engraved in the Stafford Gallery.

107. FILIPPO MONZANI.

Cephalus and Procris.

108. ANDREA SCHIAVONE.

The Marriage of St. Catherine.

Engraved in the Stafford Gallery.

109. SOLOMON KONINCK. [Nat. 1609.—Ob. 1668.]

The interior of a lofty Room, in which is a young man seated at table perusing a book.

Engraved in the Stafford Gallery.

110. FRANCESCO MILLE.

A Landscape, with Peasants carrying baskets of fruit—Effect of evening.

Engraved in the Stafford Gallery.

111. G. NETSCHER. [Nat. 1670.—Ob. 1722.]

Vertumnus and Pomona, said to represent the Portraits of the Duchesse de Mazarin and M. de St. Evremont.

Engraved by Boydell, Rhodes, and in the Stafford Gallery.

Noticed in Smith's Catalogue Raisonné, Part 4, No. 50.

112. JOHN BOTH [Nat. 1610.—Ob. 1650.]

AND

- ANDREW BOTH. [Nat. 1612.—Ob. 1656.]

A rocky Landscape, with Travellers halting.

Engraved in the Stafford Gallery, and described in Smith's Catalogue Raisonné, Part 6, No. 101.

113. CORNELIUS SCHUT AND D. SEGHERS.

The Virgin, with the Infant Saviour in her arms, surrounded by flowers.

114. HERMAN SWANNEVELT. [Nat. 1620.—Ob. 1690.]

A Landscape, with Figures loading a Vessel.

Engraved in the Stafford Gallery.

115. R. R. REINAGLE, R.A.

A Landscape, representing an extensive view over an open country.

Engraved in the Stafford Gallery.

116. JOHN TRINITZ BLANKHOF. [Nat. 1628.—Ob. 1670.]

A View on the Sea-coast during a fresh breeze.

This picture is perhaps by Dubbels.

Engraved in the Stafford Gallery.

117. GUIDO RENI.

* The Assumption, or the Immaculate Conception of the Virgin, attended by Angels.

This beautiful picture came from the Cathedral at Seville, and was

imported to Paris by General Sebastiani, from whom it was purchased by M. de la Hante, and sold by him to the late G. Watson Taylor, Esq., at the sale of whose property at Earlstoke, in 1832, Messrs. Smith, of Bond Street, became the possessors.

In Bryan's Dictionary of Painters, published by Mr. H. G. Bohn, in 1849, the Editor (Mr. G. Stanley) notices this picture. Mr. W. H. Watt has just completed a fine Engraving of it.

118. GIOVANNI GHISOLFI. [Nat. 1623.—Ob. 1683.]

A magnificent Palace, and other buildings, near a Sea-port.

119. GIOVANNI GHISOLFI.

A View of a Triumphal Arch, and other buildings.

120. SIR JOSHUA REYNOLDS. [Nat. 1723.—Ob. 1792.]

A whole-length Portrait of a Lady in a crimson robe.

121. R. MENGES. [Nat. 1728.—Ob. 1779.]

Portrait of Robert Wood, Esq., the Author of the "Ruins of Palmyra and Balbec". He accompanied the Duke of Bridgewater in his travels through Italy.

Engraved in the Stafford Gallery.

122. LUDOLPH BACKHUYSEN. [Nat. 1631.—Ob. 1709.]

A Sea-view off the Dutch Coast, represented under the effect of a stiff breeze, with a Dutch coaster and other vessels.

Engraved in the Stafford Gallery, and described in Smith's Catalogue Raisonné, Part 6, No. 117.

123. NICHOLAS BERGHEM. [Nat. 1624.—Ob. 1683.]

An upright Landscape, with Nymphs reposing, a Satyr, and other figures and cattle.

Engraved in the Stafford Gallery, and noticed in Smith's Catalogue Raisonné, Part 5, No. 283.

124. GERARD DOW. [Nat. 1613.—Ob. 1674.

* Portrait of Himself when about twenty-two years of age.

Drawn in Lithography for Smith's Catalogue Raisonné, and noticed in Part 1, No. 97 of that work.

125. FRANCIS MIERIS. [Nat. 1635.—Ob. 1681.

* Portrait of Himself when about forty-five years of age.

Formerly in the Collection of M. de St. Victor and the Count Pourtales.

See Smith's Catalogue Raisonné, Part 1, No. 78.

126. ADRIAN OSTADE. [Nat. 1610.—Ob. 1685.

A Dutch Peasant toasting a health.

From the Collection of the Duc de Chabot.

Engraved in the Stafford Gallery.

See Smith's Catalogue Raisonné, Part 1, No. 12.

127. HENRY VAN STEENWICK. [Nat. 1550.—Ob. 1603.

* Interior of a Church by torchlight, in front of which is a priest conducting a lady.

128. MICHAEL MIREVELDT. [Nat. 1568.—Ob. 1641.

Portrait of a Gentleman habited in black figured silk, and a full ruff.

Engraved in the Stafford Gallery.

129. A. BROUWER AND D. SEGHERS.

* A Landscape, representing a broken hilly scene, diversified with a few stunted trees and a cottage.

This production is surrounded by a wreath of fruit and flowers by Seghers.

Purchased in Russia by the Earl of Ellesmere. The Landscape was considered in St. Petersburg as the work of Rembrandt; but is more probably painted by A. Brouwer.

130. DAVID TENIERS. [Nat. 1610.—Ob. 1690.]

A venerable Alchemist occupied at a furnace in his laboratory, and a youth watching him. Dated 1639.

Engraved by Le Bas and Fittler; also in the Stafford Gallery, and described in Smith's Catalogue Raisonné, Part 3, No. 141.

131. VAN TOL. [Nat. 1680.]

An Old Woman with a book in her hands.

Engraved in the Stafford Gallery.

132. VAN TOL.

The Companion. An Old Man reading.

Engraved in the Stafford Gallery.

133. VAN THULDEN. [Nat. 1607.—Ob. 1686.]

The Three Magi.

Engraved in the Stafford Gallery.

134. WILLIAM VANDERVELDE. [Nat. 1633.—Ob. 1707.]

The Engagement between the English and Dutch Fleets in 1666; the former commanded by the Duke of Albemarle and Prince Rupert, and the latter by Admirals De Ruyter and Van Tromp. On the right and front is the "Royal Prince", of 92 guns, commanded by Sir G. Ascough, Admiral of the White, which, while bearing away with the rest of the fleet to join Prince Rupert, unfortunately struck on the Galloper Sands, and being left by his own fleet, was obliged to strike to the "Gonda", of 64 guns, commanded by Admiral Sweers, to which ship Admiral Van Tromp had shifted his flag during the engagement. A fireship is seen bearing down with the "Gonda", and a boat, commanded by Captain Jacques Philip Sweers, is approaching to take possession of the "Royal Prince".

For further description of this picture, see Smith's Catalogue Raisonné, Part 6, No. 219.

Engraved in the Stafford Gallery.

A repetition of this picture, with trifling alterations, occurs in No. 175, on a reduced scale.

135. JOHN VANDER HEYDEN [Nat. 1637.—Ob. 1712.
AND
ADRIAN VANDERVELDE.

A View of a Town in Holland, intersected by a canal with a drawbridge, &c.

Engraved in the Stafford Gallery, and described in Smith's Catalogue Raisonné, Part 5, No. 64.

136. REMBRANDT. [Nat. 1606.—Ob. 1674.

Portrait of a Man—a Study.

Engraved in the Stafford Gallery.

See Smith's Catalogue Raisonné, Part 7, No. 330.

137. ARY DE VOYS. [Nat. 1641.—Ob. 1693.

Portrait of a Student with a book in his hand.

Engraved in the Stafford Gallery.

138. JOSEPH CRAESBECK. [Nat. 1608.—Ob. 1668.

A Peasant dressing a wound in his head.

Engraved in the Stafford Gallery.

139. SIR PETER LELY. [Nat. 1617.—Ob. 1680.

Portrait of a Young Lady.

Engraved in the Stafford Gallery.

140. G. SCHIAGEN. [Nat. 1616.—Ob. 1668.

An Interior, with a Young Woman nursing a Child, a little boy eating porridge, and two other figures.

Engraved in the Stafford Gallery.

This picture is perhaps by Hoogstructen.

141. WILLIAM VANDERVELDE.

A Sea View during a Calm, and under the aspect of early morning, with a man shrimping.

Engraved in the Stafford Gallery.

See Smith's Catalogue Raisonné, Part 6, No. 8.

142. QUILENUS BRECKLENCAMP. [1650.
The Interior of a Cottage, with an Old Woman frying pan-
cakes.
Engraved in the Stafford Gallery.
-
143. FRANCIS DECKER.
* A River View, with Cottages.
Formerly in the Collection of George Watson Taylor, Esq.
-
144. ADRIAN VAN OSTADE.
A Lawyer busily occupied in his Study.
-
145. WILLIAM VANDERVELDE.
A Sea View during a Storm, with a single Ship of War.
Engraved in the Stafford Gallery.
See Smith's Catalogue Raisonné, Part 6, No. 216.
-
146. GASPARD POUSSIN.
A mountainous Landscape, exhibited under the effect of a
violent storm.
Engraved in the Stafford Gallery.
-
147. ALBERT CUYP. [Nat. 1606.—Ob. 1672.
A Pastoral Scene, representing a meadow with cows, and a
herdsman seated, playing on a pipe.
*Engraved in the Stafford Gallery, and described in Smith's Cata-
logue Raisonné, Part 5, No. 226.*
-
148. M. HOBBEEMA. [Nat. 1611.—Ob. 1670.
* A Watermill, and adjacent buildings.
From the Collection of M. St. Victor.
See Smith's Catalogue Raisonné, Part 6, No. 51.
-
149. VAN TOL.
The tired Musician sleeping in his chair.
This Picture is perhaps by W. Mieris.
Engraved in the Stafford Gallery.

150. VAN TOL.
An elderly Woman caressing a dog.
Engraved in the Stafford Gallery.
-
151. GUIDO.
* St. Michael driving down Satan.
This is perhaps a copy by Guercino after the well-known picture in the Capuchin Convent at Rome.
-
152. BOURGOGNONE. [Nat. 1621.—Ob. 1676.
A grand romantic Landscape, with a church on a rock.
Engraved in the Stafford gallery.
-
153. JAN STEEN. [Nat. 1636.—Ob. 1698.
* A School of Boys and Girls.
*From the Collection of the Marquis of Camden.
Engraved in Mezzotinto by V. Green, and described in Smith's Catalogue, Part 4, No. 20, and Supplement, No. 110.*
-
154. ADRIAN VAN OSTADE.
Two Artizans playing at the game of tric-trac, and a third seated by the side of a large casement, smoking his pipe.
*Engraved in the Stafford Gallery.
Formerly in the celebrated Collections of Blonde, de Gagny, and the Count de Merle; and is mentioned by Descamps.
See Smith's Catalogue Raisonné, Part 1, No. 60.*
-
155. GONZALES COQUES. [Nat. 1618.—Ob. 1684.
A Portrait of Frederick, Elector Palatine, styled King of Bohemia.
Engraved in the Stafford Gallery.
-
156. GONZALES COQUES.
Companion. Portrait of Elizabeth, Princess Palatine, daughter of James the First, married to Frederick, Elector Palatine, styled King of Bohemia.
Engraved in the Stafford Gallery.

157. SIR GEORGE HAYTER.

Portrait of the Earl of Ellesmere.

158. NICHOLAS BERGHEM. [Nat. 1624.—Ob. 1683.

A Landscape, with cattle and figures; a woman on an ass, another on foot, and a man driving cows.

Engraved in the Stafford Gallery, and described in Smith's Catalogue Raisonné, Part 5, No. 106.

159. SHAKESPEARE.

The Chandos Portrait of William Shakespeare.

This portrait is presumed to be painted by Burbage, the first actor of Richard III; as he is known to have handled the brush. It afterwards became the property of Joseph Taylor, the poet's Hamlet, who, dying about the year 1653, left it by will to Sir W. D'Avenant. At the death of Sir William, in 1663, it was purchased by Betterton, the actor; and when he died, Mr. Robert Keck, of the Inner Temple, gave Mrs. Barry, the actress, forty guineas for it. From Mr. Keck the portrait passed to Mr. Nicoll, of Mincheden House, Southgate, whose only daughter and heiress, Margaret, married James, Marquis of Carnarvon, afterwards Duke of Chandos, from whom it descended, in right of his wife, Anna Eliza, the late Duchess, to the present Duke of Buckingham, and at the sale of whose effects at Stowe, in September 1848, it was purchased by the Earl of Ellesmere.

This portrait has been recently engraved by Samuel Cousins.

160. ROTTENHAMER.

The Nativity, and Adoration of the Shepherds.

161. MIGNARD. [Nat. 1608.—Ob. 1668.

The Virgin with the Infant Saviour and St. John.

A copy after a picture by Raffaele.

162. CORNELIUS POELEMBERG. [Nat. 1586.—Ob. 1660.

A Landscape, with Nymphs bathing.

Engraved in the Stafford Gallery.

163.

C. POELEMBERG.

Companion. A Landscape, with buildings and figures.
Engraved in the Stafford Gallery.

164.

JOHN MOLENAER.

A large Company of Peasants of both sexes, assembled in a barn, celebrating a village wedding.
Engraved in the Stafford Gallery.

165.

JOHN WYNANTS AND LINGLEBACK.

A View in the neighbourhood of Haarlem. A gentleman on horseback relieving two beggars.
Engraved in the Stafford Gallery, and described in Smith's Catalogue Raisonné, Part 6, No. 21.

166.

ADRIAN VAN OSTADE.

A View in a Village, with peasants regaling and playing at nine-pins. Dated 1676.
Engraved in the Stafford Gallery, and noticed in Smith's Catalogue Raisonné, Part 1, No. 115.

167.

NICHOLAS MAES.

[Nat. 1632.—Ob. 1693.]

* A Young Woman threading her needle.
Described in Smith's Catalogue Raisonné, Supplement, No. 1.

168.

REMBRANDT.

The Prophetess Hannah hearing Samuel repeat his prayers.
This picture has been called Samuel and Eli.
Engraved by Fittler, and in the Stafford Gallery. See Smith's Catalogue Raisonné, Part 7, No. 123.

169.

CORNELIUS DUSART.

[Nat. 1665.—Ob. 1704.]

A Dutch Guinguette, with boors regaling.
Engraved in the Stafford Gallery.

170. CORNELIUS DUSART.

Companion. The Interior of a Cottage, with a party of boors smoking and drinking.

Engraved in the Stafford Gallery.

171. JOHN VAN HUYSUM. [Nat. 1682.—Ob. 1749.

An Assemblage of Flowers tastefully grouped in a vase.

Engraved in the Stafford Gallery, and noticed in Smith's Catalogue Raisonné, Part 6, No. 108.

172. JACOB RUYSDAEL. [Nat. 1636.—Ob. 1681.

* A Forest Scene, a shepherd with his flock passing a rustic bridge over a gentle cascade.

From the Collection of Sir Charles Bagot, bart.

See Smith's Catalogue Raisonné, Part 6, No. 172, and Supplement, No. 74.

173. REMBRANDT.

Portrait of a Burgomaster. A venerable man with a white beard seated in an arm-chair.

Engraved by I. de Frey, Finden, and in the Stafford Gallery.

Described in Smith's Catalogue Raisonné, Part 7, No. 280.

174. PETER PAUL RUBENS. [Nat. 1577.—Ob. 1640.

Mercury bearing Hebe in his arms to Olympus.

Engraved in the Stafford Gallery, and described in Smith's Catalogue Raisonné, Part 2, No. 587, and Supplement, No. 226.

175. WILLIAM VANDERVELDE.

A Naval Engagement between the English and Dutch fleets in 1666.

See description of a second picture, representing the same action, in No. 134.

Engraved in the Stafford Gallery, and noticed in Smith's Catalogue Raisonné, Part 6, No. 218.

.176.

ADRIAN VAN OSTADE.

The Interior of a Cottage, with a party of boors round a fire drinking and smoking.

Formerly in the Collections of M. Geldermaster, and Greffier Fagel.

Engraved by Taylor, and in the Stafford Gallery. See Smith's Catalogue Raisonné, Part 1, No. 122.

177.

ADRIAN VAN OSTADE.

A Lawyer in his Study, perusing a Deed, while his anxious client stands by his side with a present of game.

Formerly in the Collection of Greffier Fagel.

Engraved in the Stafford Gallery. Smith's Catalogue Raisonné, Part 1, No. 132.

178.

JOHN FYT.

[Nat. 1625.—Ob. 1671.]

A Mastiff Dog chained to his Kennel.

Engraved in the Stafford Gallery.

179.

DIEGO VELASQUES DE SILVA. [Nat. 1594.—Ob. 1600.]

* Portrait of Himself.

180.

GERITZ VAN HARP.

A Company of Six Persons assembled in a room, playing a concert.

Engraved in the Stafford Gallery.

181.

G. VAN HARP.

Companion. A Company of Persons Regaling.

Engraved in the Stafford Gallery.

182.

ISAAC VAN OSTADE. [Nat. 1617.—Ob. 1654.]

Travellers halting with their cattle at a country inn; among them are a lady and gentleman on horseback.

Engraved in the Stafford Gallery, and described in Smith's Catalogue Raisonné, Part 1, No. 39.

183. ISAAC VAN OSTADE.

Companion. A View in a Village, with peasants regaling at a country inn.

Engraved in the Stafford Gallery. Smith's Catalogue Raisonné, Part 1, No. 40.

184. JOHN WILDENS. [Nat. 1584.—Ob. 1644.]

A Richly-Wooded Landscape, intersected by streams of water, and enlivened by figures.

Engraved in the Stafford Gallery.

185. GILES TILBORGH. [Nat. 1625.—Ob. 1678.]

A Numerous Assembly of Persons celebrating a Village Marriage.

In this chef-d'œuvre of the Artist he has introduced his own portrait, with those of his wife and child; they are represented standing in front.

Engraved in the Stafford Gallery.

186. REMBRANDT.

Portrait of Himself, when about fifty years of age.

Engraved by Lewis, and in the Stafford Gallery. Smith's Catalogue Raisonné, Part 7, No. 204.

187. REMBRANDT.

Portrait of a Lady elegantly attired, with jewels, and a rich point-lace kerchief.

Engraved in the Stafford Gallery. Smith's Catalogue Raisonné, Part 7, No. 507.

188. JACOB RUYSDAEL.

* A Landscape, representing a wild romantic scene, with a rushing stream of water in front, and some figures, on the skirts of a forest, charring wood.

Purchased by the Earl of Ellesmere from the Collection of G. Watson Taylor, Esq., formerly in the possession of M. Lapeyriere. Known by the name of the "Charcoal Burners".

Described in Smith's Catalogue Raisonné, Part 6, No. 194.

189.

ALBERT CUYP.

A Landscape, with a grove of trees, near which are a lady and gentleman on horseback in conversation with peasants.

Formerly in the Calonne Collection.

Engraved in the Stafford Gallery. Smith's Catalogue Raisonné, Part 5, No. 227.

190.

I. WYNANTS AND A. VANDERVELDE.

A Landscape, intersected by a winding road, in which are a man and woman driving cattle.

Engraved in the Stafford Gallery. Smith's Catalogue Raisonné, Part 6, No. 60.

191.

JAN STEEN.

A Group of five figures at the door of a house, among whom is a man selling fish.

Engraved in the Stafford Gallery. Smith's Catalogue Raisonné, Part 4, No. 177.

192.

DAVID TENIERS.

Peasants celebrating a Village Marriage. The jovial party consists of about thirty-four persons assembled in the open court of a country inn; a couple are dancing.

Engraved by Fittler, and in the Stafford Gallery. See Smith's Catalogue Raisonné, Part 3, No. 663.

193.

JOHN BOTH AND C. POELEMBERG.

A Landscape, with the ruins of a brick gateway, and youths bathing in a river.

Engraved in the Stafford Gallery.

Smith's Catalogue Raisonné, Part 6, No. 27.

194.

GABRIEL METSU. [Nat. 1615.—Ob. 1658.]

A Mounted Cavalier halting at the door of a mansion, and receiving a glass of wine from the lady of the house, at the same time a domestic holds his horse.

Engraved in the Le Brun and Stafford Galleries.

Formerly in the Lubbeling Collection at Amsterdam, and described in Smith's Catalogue Raisonné, Part 4, No. 38.

195. MELCHIOR HONDEKOETER. [Nat. 1636.—Ob. 1695.

Domestic Poultry and other Birds.

Engraved in the Stafford Gallery.

196. WILLIAM VANDERVELDE.

A grand Sea View, exhibited under the effect of stormy weather, and a rolling sea. In front is a large Dutch packet, the sea breaking over her bows.

Engraved in the Stafford Gallery, and described in Smith's Catalogue Raisonné, Part 6, No. 135.

197. JACOB RUYSDAEL.

A view in Holland, representing a sluice and its dykes, surmounted with buildings and a windmill, a man walking across a bridge of boards.

Engraved in the Stafford Gallery.

See Smith's Catalogue Raisonné, Part 6, No. 135.

198. GERARD TERBURG. [Nat. 1608.—Ob. 1681.

* Paternal Instruction. An Interior, with two ladies and a gentleman.

From the Collection of Lord Wharncliffe.

Engraved by Wille, and described in Smith's Catalogue Raisonné, Part 4, No. 4, and Addenda to Supplement, No. 30.

199. FRANCIS SNYDERS. [Nat. 1579.—Ob. 1657.

Two Dogs, and a basket of Fruit.

Engraved in the Stafford Gallery.

200. ALBERT CUYP.

A large Landscape, with a meadow, in which are cows, horses, ducks, and geese. Under a cluster of trees on the left is a woman milking a cow.

Engraved in the Stafford Gallery.

See Smith's Catalogue Raisonné, Part 5, No. 225.

201. ADAM PYNACKER. [Nat. 1621.—Ob. 1673.

A Wild Mountainous Country, with a cascade of water rushing down the hills, and flowing to the front.

Engraved in the Stafford Gallery.

Smith's Catalogue Raisonné, Part 5, No. 9.

202. DAVID TENIERS.

A Village Kermess. The festive scene is composed of about seventy-six persons, assembled in the court of a guinguette: a couple are dancing to the music of a bass-viol and a violin, the latter played by a young man on a tub.

Engraved by Le Bas under the title of "Les Accords Flamands"; also by Finden, and in the Stafford Gallery, and described in Smith's Catalogue Raisonné, Part 3, No. 663.

203. ADRIAN VAN OSTADE.

The proposal. A female leaning on the half-door of a house, listening attentively to the conversation of a peasant.

Formerly in the Collections of M. Braancamp, Prince de Conti, the Duc de Chabot, &c.

Engraved by Fittler, and also in the Stafford Gallery.

Smith's Catalogue Raisonné, Part 1, No. 30.

204. ANTHONY VAN DYCK.

* Portrait of a Gentleman.

205. WILLIAM DOBSON. [Nat. 1610.—Ob. 1646.

* Portrait of Cleveland the Poet.

206. KAREL DU JARDIN. [Nat. 1640.—Ob. 1678.

Travellers with Laden Mules fording a shallow river between mountains; the effect of a fine summer's evening.

Engraved in the Stafford Gallery.

Described in Smith's Catalogue Raisonné, Part 5, No. 108.

207.

ALBERT CUYP.

A Landscape, with the ruins of a building called Koningsvelt, on the right; on the opposite side are travellers at an inn; a fine evening effect.

Engraved in the Stafford Gallery.

Smith's Catalogue Raisonné, Part 5, No. 62.

208.

PAUL POTTER.

[Nat. 1625.—Ob. 1654.]

Three Oxen in a Meadow, one of which is lying down near an old willow tree.

Dated 1650.

Engraved in the Stafford Gallery.

Smith's Catalogue Raisonné, Part 5, No. 23.

209.

NICHOLAS BERGHEM.

A Group of Peasants and Cattle passing over a barren heath; a woman is mounted on a laden ass.

Engraved in the Stafford Gallery.

Smith's Catalogue Raisonné, Part 5, No. 282.

210.

JOSEPH VERNET.

[Nat. 1714.—Ob. 1789.]

A View on the Coast of Naples, with fishermen and other figures; a calm and foggy morning.

Engraved in the Stafford Gallery.

211.

JOSEPH VERNET.

The Companion. A View from the Shore, looking seaward, during a violent storm and shipwreck.

Engraved in the Stafford Gallery.

212.

NICHOLAS BERGHEM.

A grand Landscape, with a woman on a mule, and other peasants and cattle passing by the side of a rocky mountain, clothed in part with trees.

Engraved in the Stafford Gallery.

Smith's Catalogue Raisonné, Part 5, No. 281.

213.

DAVID TENIERS.

Peasants playing at bowls in the Court-yard of a Cottage.

Engraved by Fittler, and in the Stafford Gallery.

Noticed in Smith's Catalogue Raisonné, Part 3, No. 661.

214.

WILLIAM VAN MIERIS. [Nat. 1662.—Ob. 1747.]

A Musician, richly habited in the costume of the period, seated at a table, apparently giving orders to a young woman.

Engraved in the Stafford Gallery.

Smith's Catalogue Raisonné, Part 1, No. 22, and Supplement, No. 27.

215.

DAVID TENIERS.

A Party of boors playing at Cards in a Cottage, and two others near a fire in the background.

Engraved by Fittler, and in the Stafford Gallery.

Smith's Catalogue Raisonné, Part 3, No. 502.

216.

ALBERT CUYP.

The Landing of Prince Maurice at Dort, with a representation of that city, and of the numerous vessels assembled on the occasion, during a fine summer's morning.

Formerly in the Collection of M. Van Slingelandt, of Dort.

Engraved by Fittler, and in the Stafford Gallery.

Described in Smith's Catalogue Raisonné, Part 5, No. 12.

217.

GABRIEL METSU.

A woman at her stall, with fish and fruit.

Engraved in the Stafford Gallery.

Smith's Catalogue Raisonné, Part 4, No. 59.

218.

DAVID TENIERS.

An Interior, with a party of boors drinking and gaming; two are in front smoking, and four more are playing at cards in the background.

Engraved by Fittler, and in the Stafford Gallery, and noticed in Smith's Catalogue Raisonné, Part 3, No. 664.

219. FRANCIS VAN MIERIS. [Nat. 1635.—Ob. 1681.]

A Lady in her morning dress, seated at her toilet, tying a cap under her chin.

Engraved in the Stafford Gallery.

Smith's Catalogue Raisonné, Part 1, No. 51.

220. ADRIAN VANDERVELDE. [Nat. 1639.—Ob. 1672.]

A Meadow, in which are two cows and a sheep; one of the cows a woman is milking.

Engraved in the Stafford Gallery.

Smith's Catalogue Raisonné, Part 5, No. 61.

221. EGLON VANDERNEER. [Nat. 1643.—Ob. 1703.]

The Juvenile Drummer and his companions.

Engraved in the Stafford Gallery.

Smith's Catalogue Raisonné, Part 4, No. 19.

222. ADRIAN BROUWER. [Nat. 1608.—Ob. 1640.]

A Company of Boors singing.

223. CORNELIUS BEGA. [Nat. 1630.—Ob. 1664.]

Interior of a Cottage, with a woman nursing a child, and two other persons near her.

From the Collection of Greffier Fagel.

Engraved in the Stafford Gallery.

224. GONZALES COQUES.

* Portrait of David Teniers habited in black.

From the Collection of G. Watson Taylor, Esq.

Smith's Catalogue Raisonné, Part 4, No. 28.

225. WATERLOO. [Nat. 1618.—Ob. 1679.]

A perspective View of a Road skirted with Trees.

Engraved in the Stafford Gallery.

226. PETER WOUVERMANS. [Nat. 1625.—Ob. 1683.]

A Horse Fair.

Engraved in the Stafford Gallery.

227.

I. WYNANTS AND A. VANDERVELDE.

A Landscape, presenting a hilly site, with figures and cattle, a woman crossing a bridge of planks placed over a small stream.

Engraved in the Stafford Gallery.

Smith's Catalogue Raisonné, Part 6, No. 12.

228.

THEODORE STOOP.

[Nat. 1610.]

A Traveller halting in a barren Landscape.

Engraved in the Stafford Gallery.

229.

PETER WOUVERMANS.

The Disasters of War. Amidst a scene of carnage is an armed soldier on horseback pursuing two flying peasants.

This picture more resembles Hughtenburg.

Engraved in the Stafford Gallery.

230.

JOHN VAN HUGHTENBURG. [Nat. 1646.—Ob. 1733.]

A Rencontre of Cavalry.

Engraved in the Stafford Gallery.

231.

GERARD DOW.

A Woman at an Arched Window, selling Herrings to a young girl.

Engraved in the Stafford Gallery.

Smith's Catalogue Raisonné, Supplement, No. 17.

232.

JOHN ASSELEYN.

[Nat. 1610.—Ob. 1660.]

A Landscape, with a lofty bridge, and cattle and figures, preparing to ford a stream.

Engraved in the Stafford Gallery.

233.

GASPAR NETSCHER.

[Nat. 1639.—Ob. 1684.]

An Interior, with a company of two ladies and a gentleman; one of the former is washing her hands in a silver salver, held by a page.

Engraved by Rhodes, and in the Stafford Gallery. Smith's Catalogue Raisonné, Part 4, No. 51.

234. JOHN HENDRICK ROOS. [Nat. 1631.—Ob. 1685.
Cattle in a Meadow.
Engraved in the Stafford Gallery.
-
35. ALBERT CUYP.
A View of the Ruins of Koningsvelt, in Holland, situated in a barren country. In front are a gentleman on horseback, and a herdsman keeping cows.
This picture is perhaps by J. Van Stry.
Engraved in the Stafford Gallery.
-
236. ARNOLD VANDERNEER. [Nat. 1619.—Ob. 1680.
A View in Holland by Moonlight, with cows.
Engraved in the Stafford Gallery.
-
237. W. DOBSON.
A Head of Charles I; a spirited study.
Engraved in the Stafford Gallery.
-
238. ABRAHAM JANSENS.
The Interior of a Kitchen, with a woman scouring a pot.
This picture is probably by Slingelandt.
Engraved in the Stafford Gallery.
-
239. ARTOIS AND TENIERS.
* A Woody Landscape, with a group of figures in conversation on the foreground.
-
240. L. BACKHUYSEN.
A View on a River in Holland; two merchantmen in full sail, and other vessels of different descriptions.
Engraved in the Stafford Gallery.
Smith's Catalogue Raisonné, Part 6, No. 116.

241. PHILIP WOUVERMANS. [Nat. 1620.—Ob. 1668.

* The Field of Battle; a repulse of cavalry by infantry formed in squares.

From the Collection of Cardinal Fesch.

242. GABRIEL METSU.

A Lady caressing a little Spaniel Dog.

Engraved in the Stafford Gallery.

Smith's Catalogue Raisonné, Part 4, No. 4.

243. NICHOLAS BERGHEM.

A View over an open flat country, covered in part with water, and crossed by a long bridge, with a hawking party and other figures, and cattle—effect of a fine summer's evening.

Formerly in the Collections of M. Van Stingelandt and M. de Calonne. Engraved in the Stafford Gallery, and described in Smith's Catalogue Raisonné, Part 5, No. 84.

244. GERARD DOW.

The Interior of a Study, in which the Artist has introduced his own portrait when young, sitting near a table, and playing the violin. Arch top.

This small picture may be cited as a most perfect specimen of the Master. It is engraved by Finden, Matan, and others; also in the Stafford Gallery, and fully described in Smith's Catalogue Raisonné, Part 1, No. 102.

245. ANNIBAL CARACCI.

Christ on the Cross.

From the Orleans Collection.

246. JOHN VAN OS. [Nat. 1744.—Ob. 1808.

A rich Assemblage of Fruit and Flowers, tastefully grouped in a vase, and on a marble slab.

Engraved in the Stafford Gallery.

247. JACOB RUYSDAEL.

A Landscape, composed of a hill clothed with trees, and a river, in which some men are fishing.

Engraved in the Stafford Gallery.

Smith's Catalogue Raisonné, Part 6, No. 203.

248. DAVID TENIERS.

A View in Flanders during winter, with numerous figures.

Engraved by Laurent, and in the Stafford Gallery. See Smith's Catalogue Raisonné, Part 3, No. 603.

249. JAMES KIERINGS AND C. POELEMBERG.

A woody Sylvan Scene, with nymphs.

Engraved in the Stafford Gallery.

250. JOHN WYCK. [Nat. 1640.—Ob. 1702.]

The Result of War. A party of cavalry and other soldiers halting before a heap of slain.

Engraved in the Stafford Gallery.

251. J. M. W. TURNER, R.A.

A Marine View, under the effect of squally weather and a heavy rolling sea. Three Dutch fishing boats are near the front, and some ships of war appear in the distance.

Engraved in the Stafford Gallery.

This picture, although by an artist now living, and in the full exercise of his powers, is, I believe, fifty years old, or more. It was painted as a companion to the picture by William Vandervelde, No. 196 in the Collection.—E. E.

252. HENRY VAN STEENWICK AND VAN THULDEN.

The Interior of a Church at Antwerp, richly adorned with pictures and statues, represented during the performance of mass at a small altar on the right of the middle aisle.

Engraved in the Stafford Gallery.

253. DAVID TENIERS THE ELDER. [Nat. 1582.—Ob. 1649.

Cottage Scenery. On the left is a peasant, with a basket at his back, approaching a house, at the door of which stands a woman.
Engraved in the Stafford Gallery.

254. VANDER CAPELLE. [Nat. 1635.]

A View on a River in Holland, with boats, &c.
Engraved in the Stafford Gallery.

255. PHILIP WOUVERMANS.

A Landscape, with a hawking party and their attendants.
Engraved in the Stafford Gallery.
Smith's Catalogue Raisonné, Part 1, No. 414, and Supplement, No. 192.

256. M. HOBBEWA.

A Landscape, with cottages among clusters of trees, and men near a hovel, occupied with bundles of reeds. The effect of a fine summer's day pervades the scene.
Engraved in the Stafford Gallery.
Smith's Catalogue Raisonné, Part 6, No. 2.

257. M. HOBBEWA AND P. WOUVERMANS.

A Landscape, with a horse and cart, and a halt of travellers near the confines of a wood.
Engraved in the Stafford Gallery.
This picture is perhaps by Jacob Ruysdael, and is described as the work of that Master in Smith's Catalogue Raisonné, Part 6, No. 317.

258. WILLIAM VANDERVELDE.

A Sea View off the Dutch coast during a fresh breeze. A fishing boat in front, and two ships of war in the middle distance.
Engraved in the Stafford Gallery.
Smith's Catalogue Raisonné, Part 6, No. 217.

259.

SIR JOSHUA REYNOLDS.

* Portraits of a Family of distinction, with an Ayah or Hindoo nurse.

260.

SIMON DE VLIAGER.

[Nat. 1612.]

A View off the Coast of Scheveling, with shipping and figures.
Engraved in the Stafford Gallery.

261.

FRANCIS VAN MIERIS, JUN.

[Nat. 1689.]

An Interior, with a woman scouring a pot on a cask, and a child standing by her.

Engraved in the Stafford Gallery.

262.

WILLIAM VANDERVELDE.

A View of the Entrance to the Brill River during a light breeze, with a smack in front.

Engraved in the Stafford Gallery.

Smith's Catalogue Raisonné, Part 6, No. 220.

263.

JOHN VAN SLINGELANDT. [Nat. 1640.—Ob. 1691.]

The Interior of a Kitchen, with three figures; a cat playing with a mouse, and a great variety of culinary utensils.

Engraved in the Stafford Gallery.

Smith's Catalogue Raisonné, Part 1, No. 12.

264.

P. P. RUBENS.

Saint Theresa on her knees before the Saviour, interceding for the delivery of souls from Purgatory.

Engraved in the Stafford Gallery.

Smith's Catalogue Raisonné, Part 2, No. 75.

265.

CORNELIUS DE HEEM.

[Nat. 1623.]

A Variety of Fruit and other objects, grouped on a table.
Engraved in the Stafford Gallery.

266. JACOB RUYSDAEL.
A Bird's-eye View of a country in the neighbourhood of Haarlem.
Engraved in the Stafford Gallery.
Smith's Catalogue Raisonné, Part 6, No. 202.
-
267. G. TILBORGH.
Peasants regaling at a Cottage-door.
Engraved in the Stafford Gallery.
-
268. JOHN WYNANTS AND LINGLEBACK.
The Anglers. A rural and sequestered scene, with a sedgy brook.
Engraved in the Stafford Gallery.
Smith's Catalogue Raisonné, Part 6, No. 121.
-
269. JACOB RUYSDAEL.
* A Landscape, represented under the aspect of a cloudy day, in front are two peasants driving a flock of sheep.
Engraved in the Stafford Gallery.
Smith's Catalogue Raisonné, Part 6, No. 172, und Supplement, No. 74.
-
270. SIR JOSHUA REYNOLDS.
* Portrait of Dr. Thomas, Bishop of Rochester.
Engraved in Mezzotinto by S. W. Reynolds.
-
271. RICHARD WILSON. [Nat. 1714.—Ob. 1782.
The Death of Niobe and her Children, in a grand Landscape.
Engraved in the Stafford Gallery.
-
272. STEINLÉ, of Frankfort.
* The Virgin and Child, with two Saints.
-
273. RICHARD WILSON.
A Landscape, with a river flowing at the base of a high hill, two figures are seated in the foreground.
Engraved in the Stafford Gallery.

274. CORNELIUS HUYSMAN. [Nat. 1648.—Ob. 1727.
An agreeable Woody Landscape, enlivened with figures.
Engraved in the Stafford Gallery.
-
275. CORNELIUS HUYSMAN.
Companion. A Richly Wooded Landscape, diversified with
cattle and figures.
Engraved in the Stafford Gallery.
-
276. H. M. ROKES, called ZORG. [Nat. 1621.—Ob. 1682.
A Cabaret, with Boors drinking and smoking.
This picture is probably by Abshoven, a pupil of Teniers.
Engraved in the Stafford Gallery.
-
277. THOMAS GAINSBOROUGH. [Nat. 1727.—Ob. 1788.
Cows in a Meadow.
Engraved in the Stafford Gallery.
-
278. VANDER LEEUW. [Nat. 1664.—Ob. 1705.
A Landscape, with a herd of six cows in a meadow.
Engraved in the Stafford Gallery.
-
279. F. ALBANO.
Salamacis and Hermaphroditus.
From the Orleans Collection.
Engraved in the Galerie du Palais Royal and Stafford Gallery.
-
280. FRANK HALS. [Nat. 1584.—Ob. 1666.
A Portrait of a Lady wearing a large Ruff.
This picture more resembles the style of Rembrandt.
Engraved in the Stafford Gallery.
-
281. J. WYNANTS AND A. VANDERVELDE.
A Landscape, with a woman on horseback, and peasants
driving cattle on a road.
Engraved in the Stafford Gallery.
Smith's Catalogue Raisonné, Part 6, No. 119.

282. PHILIP WOUVERMANS.

A View on the Banks of a Canal, with peasants unloading a hay-cart, and others occupied with horses.

Engraved in the Stafford Gallery.

Smith's Catalogue Raisonné, Part 1, No. 417, and Supplement, No. 196.

283. PHILIP WOUVERMANS.

Companion. Grooms Watering Horses at the foot of a bridge, over which is passing a cart loaded with hay.

Engraved in the Stafford Gallery.

Smith's Catalogue Raisonné, Part 1, No. 418, and Supplement, No. 197.

284. ARNOLD VANDERNEER.

A View of a Village on the banks of a river, and surrounding country, by moonlight.

Engraved in the Stafford Gallery.

285. FERDINAND BOL. [Nat. 1611.—Ob. 1681.

(OR SOME OTHER PUPIL OF REMBRANDT.)

* Oval Portrait of a Lady.

286. PAUL DE LA ROCHE.

The Soldiers of the Parliament offering insults to Charles I after his Trial.

"After sentence, the king, being hurried from their bar, as he passed down the stairs, the common soldiers, laying aside all reverence to sovereignty, scoffed at him, casting the smoke of their stinking tobacco in his face (no smell more offensive to him), and flinging their foul pipes at his feet."—Extract from Sanders' Pamphlets of Charles I, published in 1660.

287. JOHN HOPPNER. [Nat. 1759.—Ob. 1810.

Portrait of Lady C. Greville, seated with a dog in her lap.

288. SIR PETER LELY.

Portrait of the Countess of Middlesex (half-length).

Engraved in the Stafford Gallery.

289. BOURGOGNONE.
A conflict of Cavalry.
Engraved in the Stafford Gallery.
-
290. BOURGOGNONE.
Companion. A Charge of Cavalry near the walls of a fortified town.
Engraved in the Stafford Gallery.
-
291. GASPAR POUSSIN.
A grand Mountainous View near Tivoli (upright).
Engraved in the Stafford Gallery.
-
292. PETER TEMPESTA. [Nat. 1637.—Ob. 1701.
An Upright Landscape: a View of the Fall of Terni.
-
293. GIULIO ROMANO. [Nat. 1492.—Ob. 1546.
The Nurture of Hercules.
From the Orleans Collection.
Engraved in the Galerie du Palais Royal and Stafford Gallery.
-
294. ANDREA DEL SARTO. [Nat. 1488.—Ob. 1530.
* Holy Family—circular.
-
295. PARMIGIANO.
Cupid shaping his Bow.
This picture was painted for the Chevalier Bayard. It formerly belonged to the Queen of Sweden, and subsequently came from the Orleans Collection.
Engraved in the Galerie du Palais Royal and Stafford Gallery.
-
296. VEREBOOM. [1620.
A grand Woody Landscape, with figures.
-
297. SCHOOL OF BOLOGNA.
* Tantalus.

298. PAUL VERONESE.
 Venus bewailing the death of Adonis.
From the Orleans Collection.
Engraved in the Stafford Gallery.
-
299. LUIS DE VARGAS. [Nat. 1528.—Ob. 1590.
 St John represented sitting on a bank, with a cup in one
 hand, and a cross in the other.
Engraved in the Stafford Gallery.
-
300. FRANCIA (Style of).
 St. John Baptizing our Saviour.
-
301. TITIAN (After).
 The Peter Martyr.
An old copy.
-
302. GUERCINO.
 Abigail meeting David with presents. A drawing in bistre for
 the large picture described in No. 27 of the Catalogue.
-
303. JOHN WYCK.
 A Battle Piece. The principal group represents a desperate
 conflict of Cavalry near the walls of a fort.
-
304. J. H. FOLEY. A.
 * Ino and Infant Bacchus, a marble group.
-
305. H. DE TRIQUETI, OF PARIS.
 * A Faun and Cupid, a marble group.

